



California Native Plant Society
Santa Clara Valley Chapter

THE BLAZING STAR

May-June 2015

GENERAL MEETING & PROGRAM

Friday, May 15 at 7:30 PM
Los Altos Library Program Room
13 So. San Antonio Road, Los Altos

State of Change:
Forgotten Landscapes of California
A talk by author **Laura Cunningham**

Imagine vernal pools, protected lagoons, grassy hills rich in bunchgrasses and, where the San Francisco Bay is today, ancient bison and mammoths roaming a vast grassland. Through the use of historical ecology, Laura Cunningham will walk us through these forgotten landscapes to uncover secrets about the past, explore what our future will hold, and experience the ever-changing landscape of California.

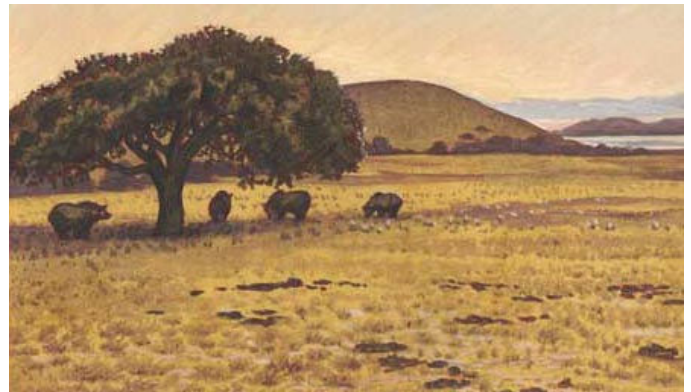
Combining the skill of an accomplished artist with passion for landscapes and training as a naturalist, Laura has spent more than two decades poring over historical accounts, paleontology findings and archaeological data. Traveling with paintbox in hand, she tracked the remaining vestiges of semi-pristine landscape, seeking clues that revealed the California of past centuries.

Laura, an artist and naturalist, studied paleontology and biology at the University of California, Berkeley, and has worked at various field biology jobs for the California Department of Fish and Game, the U.S. Geological Survey, and other organizations, getting to know such species as the Owens Valley pupfish, the southern California steelhead trout, the Yosemite toad, and the Panamint alligator lizard. Copies of Laura's book, *A State of Change: Forgotten Landscapes of California*, will be available for purchase.

Directions: From Foothill Expy., travel ½ mile on San Antonio Rd. towards the Bay, cross Hillview and turn right into the driveway; the library is on the left. From El Camino, travel towards the hills on San Antonio Rd., cross

Edith and turn left into the unmarked driveway just before Hillview. The sign on San Antonio Rd. reads "Civic Center, Library and History Museum." Enter through the lobby of the main entrance.

CNPS general meetings are free and open to the public. For more information, contact Chapter President Stephen Rosenthal at sailinsteve@sbcglobal.net or the Chapter phone (650) 260-3450.



Grizzlies dine on fallen acorns under a Coast live oak near San Francisco Bay, centuries ago. The foreground is dug up by their long claws as they hunted for voles in the bunchgrass. The flats contain mostly California oatgrass (*Danthonia californica*). Artwork by Laura Cunningham.

CHAPTER ACTIVITIES

Native Plant Nursery at Hidden Villa

Volunteer Opportunities to Renovate the Nursery
Our nursery is the primary source of revenue for our Chapter as well as the "go-to" source of native plants for our gardens. The amazing thing is that it was all built by the volunteer efforts of our Chapter members. Now, after more than 15 years of plant propagation, production, expansion, and most recently the need for upgrades to ensure that our plants do not spread pathogens, the nursery again needs your help.

If you have carpentry, plumbing, or irrigation skills, or if you just want to help out in updating the nursery, there is a place for you. In the next few months we will be planning, sourcing materials, building tables and storage units. There will be opportunities for diverse talents, from drawing up plans, construction, dirt digging, gravel hauling, to writing checks for materials. We will be scheduling work days to fit the availability of volunteers. To join the effort, please contact nursery manager Melanie Cross (see contact information below).

Nursery Workdays Ongoing

Come help propagate plants for restoration projects and our fall plant sale by volunteering at any of our nursery work sessions, every **Wednesday and Thursday, from 10am to 1pm** (note summer hours). Bring garden gloves, sunhat, clippers, liquids and your lunch if you like. Other tools will be provided at the nursery. Knowledge of plants is not necessary; your willingness to help is all that's required.

Reusing Plastic Pots

We appreciate donations of gently-used one-gallon black plastic pots. You can help us keep our plants free of pathogens (*Phytophthora*) by keeping potentially contaminated soil out of our nursery. Please brush all soil from pots before you bring them to the nursery. We will wash and disinfect the pots before we use them.

To volunteer or for more information, **contact** Melanie Cross at (650) 847-1350 or melanie@pcross.com; or Ray Deutsch at (650) 365-6136 or ray.deutsch@yahoo.ca.

Directions: Hidden Villa is located on Moody Road west of Foothill College. From Hwy. 280 in Los Altos Hills, take the Moody Road exit and head west. Two miles west of Foothill College, look for the Hidden Villa sign and driveway on the left. Proceed over the bridge and park in the visitor center parking lot to your right. The Nursery is at the greenhouse just beyond the visitor center.

Gardening with Natives

Gardening with Natives (GWN), a special interest group within the Chapter, includes beginning and seasoned native plant gardeners, along with landscape architects and designers. GWN offers talks throughout the year, which are free and open to all.

This year's themes are *How I Did It* and *Maintaining Your Native Garden*. The monthly speakers will share tips on how they created their native garden or on a specific garden maintenance task. For more information, visit www.cnps-scv.org/index.php/gardening/gardening-with-natives.

These programs are made possible by the co-sponsoring libraries and our volunteers who help with program logistics. If you would like to help organize similar programming at a library near you, contact arvind.kumar@cnps.org.

How to Lose Your Lawn and Live Happily Ever After, a talk by Claudia Boulton

Tuesday, May 12, 7:00-8:30 PM, Morgan Hill Library, 660 West Main Avenue, Morgan Hill (408) 779-3196

You stopped watering your lawn because of the drought and because you wanted something new, but now the "lawn" is full of weeds. What do you do? Come to this talk and be inspired to create a beautiful, water-wise garden! See a variety of no-lawn landscaping styles and ideas. Get professional tips on removing that weed-filled patch called a lawn, learn to choose climate-adapted native plants, and find out how you can qualify for landscape rebates. You'll see how to have a lush landscape without water-hogging grass.

Claudia Boulton started her landscape design firm in 2005 and is a Master Gardener (MG) associated with the Monterey Bay Master Gardeners. She has presented to MG trainees, garden clubs, and other public forums. She trained at Cabrillo College in Aptos, where she lives and gardens. She is passionate about California native, Mediterranean, and other drought-tolerant plants and uses them in her design work.

How I Did It: Creating a Bee-Friendly Native Garden, a talk by Debbie Ballentine

Tuesday, May 19, 7:00-8:30 PM, Saratoga Library, 13650 Saratoga Ave., Saratoga (408) 867-6126

Most people are aware of the honey bee crisis, but honey bees aren't the only ones in trouble. Other pollinators are also in decline. Since this crisis, researchers have put more emphasis into studying all pollinators and learned that native bees not only pollinate crops alongside honey bees, but they also improve the efficiency of honey bee pollination. At this talk learn how to create a bee-friendly garden for honey and native bees – giving them a place in which to live, eat and raise their young, while attracting other wildlife such as butterflies, birds, hummingbirds and more. We'll also enjoy a humorous look at native "bee-behaviors."

Debbie Ballentine joyfully shares her knowledge of California native plants, wildlife gardening and sustainable landscaping through her writing, speaking and photography. She is currently a garden writer for internationally acclaimed Houzz.com.

**Using Graywater with Your Native Plants,
a talk by Deva Luna**

**Thu, May 28, 7:00-8:30 PM, Mountain View Library,
585 Franklin St, Mountain View (650) 903-6337**

We are in our fourth year of drought and it is imperative that we conserve every precious drop of water. Graywater is a great way to re-use water from inside the house for landscape irrigation outside of the house. Come learn how you can install a simple laundry-to-landscape system and which native plants are best suited for this type of irrigation.

Deva Luna is a sustainable and Bay Friendly-certified landscape designer who has been teaching and speaking about horticulture for 15 years. She has a degree in "Plants and Art" from U.C. Davis and works for EarthCare Landscaping in Cupertino.

**Propagating Native Seeds and Seed
Exchange, a talk by Steve Rosenthal**

**Saturday, June 6, 11 AM - 12:30 PM, Berryessa
Library, 3355 Noble Ave., San José (408) 808-3050**

Many California native annuals can be started any time of the year and this is a good time to start the seeds of native perennials that can be planted in the fall. Our speaker will discuss growing annuals, such as desert bluebells, from seed, and how to keep your garden in color all summer long. He'll also talk about using a cold frame to get plants started even in late fall and early winter. Bring native seeds to share (if you have them), small envelopes, and a pen or pencil to note what you are bringing home.

Stephen Rosenthal is the current president of our Chapter of CNPS and volunteers with Alum Rock Park in order to help restore its native habitat.

**The Best Books for Native Plant Gardeners,
a talk by Jackie Pascoe**

**Wednesday, June 10, 6:00-7:30 PM, Willow Glen
Library, 1157 Minnesota Ave., San Jose (408) 808-3045**

Whether you are a new native plant gardener or a seasoned expert, you are always looking for tips on how to make your garden flourish. Come to this lecture and learn which native plant books are the best ones to checkout from your local library or to select for your own purchase. Our speaker will tell you which books she has found the most useful in renovating her extensive garden and why.

Jackie Pascoe is "Country Mouse" from the popular blog Town Mouse and Country Mouse (www.tmousemouse.blogspot.com). She has been sharing her experiences in starting, planting, and maintaining her country garden since 2008. Jackie is also on the Board of the Santa Cruz County chapter of CNPS. She has a wealth of experience and lots of books to share!

Note this talk's early start time: **6:00pm**.

**How I Did It: Creating a Butterfly Garden,
a talk by Paul and Harmina Mansur**

**Wednesday, June 24, 7:00-8:30 PM, Campbell Library,
77 Harrison Ave., Campbell, (408) 866-1991**

Butterflies are often called the "winged jewels of the garden," and they do indeed add sparkle to our yards. California has almost 70 species of butterflies that you can attract to your garden by growing a variety of native plants which will provide nectar and habitat. Hear how one couple transformed their typical suburban garden into a moth and butterfly haven, and a Monarch butterfly way station.

Paul and Harmina Mansur filled in the pool of their back yard and transformed the seemingly sterile lot into a garden abundant with moths, butterflies, and caterpillars. Their garden has been featured in the April 2010 issue of the local magazine *Bay Nature* and in Nancy Bauer's book *The California Wildlife Habitat*. They have been opening their garden every other year to the Going Native Garden Tour since 2010.

New Videos at Chapter YouTube Channel

Choose from dozens of videos to view on a variety of topics including presentations from the January CNPS Conservation Conference and our own GWN subgroup. Click on the YouTube link from our Chapter website's main menu, or visit www.youtube.com/user/sailinsteve1.

Keying with Natives

Join us as we learn and practice methods of identifying the native plants of our region (aka keying). From beginners to more advanced, there are challenges for all. Bring in plant

samples if you have some or just come and work with the materials provided. We discuss the various plant books and practice keying with them. Microscopes are also available.

The upcoming dates are **Fridays, May 29 and June 26 from 6:30pm - 8:30pm**. We meet at the Peninsula Conservation Center (PCC), 3921 E. Bayshore Road in Palo Alto. For more information, please contact Joe Cernac at joecernac@sbcglobal.net or (408) 292-5465; or Sally Casey at (408) 377-0989.

Directions to PCC: From Hwy. 101 take the San Antonio Rd. exit and head north. Take your next left onto East Bayshore, which will curve left then right. Take your next right onto Corporation Way. Your next left is the entrance to the PCC parking lot. The meeting rooms are on the first floor.

CONSERVATION CORNER

Rare Plants

Conservation: Adopt-a-Plant

Want to take an active role in the conservation of the beautiful rare, and frequently endangered, plants and ecosystems in our area? Here is a way to do it. Following the lead of the East Bay Chapter, the rare plant committee of our Chapter is putting in place an Adopt-a-Plant Program.

From the San Mateo Coast to the slopes of Mt. Hamilton, our Chapter area has a remarkably diverse plant population including a number of rare species. We also are one of the largest urban areas in the state and the pressure to turn wildlands and open space into housing tracts and industrial parks is intense. As a result, some of our rare species and their habitats could disappear. CNPS is a leader in researching and advocacy for rare plants through the rare plant inventory. There are just not enough resources to keep track of all the species of concern. Some plants in the inventory have not been seen in more than a century.

This is where the Adopt-a-Plant Program comes in. Chapter members, individually or in small groups, pick specific plants which they commit to monitor on a regular basis, reporting on their presence, abundance and possible

threats to their existence. Instead of a single species, it is also possible to adopt a specific area which contains several rare plants of concern.

At a February meeting of the Chapter rare plant group, a dozen members and state Rare Plant Treasure Hunt coordinator Danny Slakey chose five rare plant species and four locations for monitoring. The species adopted were woodland woollythreads (*Monolopia gracilens*), Choris' popcornflower



Rare plants adopted so far. Center: rare plant team meeting; upper left then clockwise: woodland woollythreads, Choris' popcornflower, Satan's goldenbush (photo by Chris Winchell), Congdon's tarplant, Dudley's lousewort (photo by Gloria Heller). All other photos by Toni Corelli.

(*Plagiobothrys chorisianus* var. *chorisianus*), Satan's goldenbush (*Isocoma menziesii* var. *diabolica*), Congdon's tarplant (*Centromadia parryi* ssp. *congdonii*) and Dudley's lousewort (*Pedicularis dudleyi*). The areas chosen were the San Mateo coast, the summit of Mt. Hamilton, Cañada de los Osos, and the San Antonio Valley.

More "foster parents" are needed to help us monitor our rarities. If you are

interested in joining this citizen science activity please contact Don Mayall (donald.mayall@comcast.net) or Toni Corelli (corelli@coastside.net)

For a list of the rare plants in San Mateo and Santa Clara County visit cnps-scv.org/index.php/conservation/rare-plants. You can click on the name for more information from the CNPS inventory, or the photo for the species sheet.

For an excellent description of the East Bay CNPS Adopt-a-Plant program visit www.ebcnps.org/plant-science/rare-plants-committee/.

Conservation (Formerly LIVECoRPs)

The next meetings of our Conservation Committee will be on **Thursdays, May 21 and June 18 at 7pm** at the PCC in Palo Alto. Please join us in our important work. For questions, comments or concerns, please contact Conservation Chair Linda Ruthruff at ldruff@hotmail.com. For **directions** to the PCC, please see the previous Keying with Natives article.

CHAPTER SERVICE OUTINGS

Habitat Restoration at Edgewood Park

After 26 seasons at Edgewood Park, our Edgewood Weed Warriors habitat restoration program (aka EWW) has come a long way. Yet we still have much to do to make Edgewood an inspirational showcase of all CNPS stands for. So come share the beauty of Edgewood with us, learn a ton, and help keep Edgewood native!

Our **Friday 9am** sessions run year round and **Wednesday 5:30pm** sessions continue through Daylight Savings Time. Monthly **Saturday 9am** sessions take place the **3rd Saturday** March thru July (August and September dates are still under consideration), including:

Date	Meet At	Event Theme
May 16	West Kiosk	Endangered Species Day & National Biodiversity Day
June 20	Ed. Center Kiosk	Ken Himes Day!

For EWW info., schedules, and meeting places you can visit eww.cnps-scw.org; email program chair Drew Shell, et al., at ewwinfo@friendsofedgeswood.org; or phone Friday session leader Paul Heiple at (650) 854-7125.

Sat Jun 6 10am - Noon Fountain Thistle Work Party (San Mateo)

Join leaders Ken Himes and Jake Sigg, of Santa Clara Valley and Yerba Buena Chapters respectively, on the return to our ongoing restoration work at this site, the intersection of I-280 and Hwy. 92.

We will be entering our 8th year of twice-yearly work parties. We work to restore the rare, federally endangered fountain thistle (*Cirsium fontinale* var. *fontinale*), by removing brush and trees that would like to take over this herbaceous community.

We are eager to return because our accomplishments are very visible. Gone is the pampas grass that was the former focus of our removal efforts; today looking for surviving pampas grass seedlings is like an Easter egg hunt. Also fun is ferreting out another baddie, yellow star-thistle, which is not plentiful and becoming less so yearly. That's the removal, and what has replaced them is fountain thistle - thousands of them! Reward indeed.

We meet at the end of Lessingia Court in San Mateo. If you can't locate it on Google or Mapquest, email

jakesigg@earthlink.net, or (415) 731-3028. Optional camaraderie over Greek pizza afterwards.

Sat June 20 10am - 2pm Crystal Springs Watershed (Mid-peninsula)

Join Don Thomas on a walk and weed to see fountain thistle in the Crystal Springs Watershed, normally closed to the public. This plant is endemic to the San Francisco Peninsula, and most of the populations occur in the Crystal Springs Watershed. We will visit a small fountain thistle population in the Watershed near Polhemus Road, where coyote brush (*Baccharis pilularis*) is invading the serpentine riparian habitat.

This stop will include a short work session to remove the coyote brush. Tools will be provided. We will then drive a short distance to a serpentine seep population of fountain thistle where there is an opportunity to see leopard lilies (*Lilium pardalinum*) in bloom. There is also an optional trip to see a third, larger fountain thistle colony near Lower Crystal Springs Reservoir.

We will walk less than two miles in total. The activities will end in the early afternoon. The trip is limited to 25 participants. For more information, or to **reserve your spot**, contact Don Thomas at don_e_thomas@yahoo.com or (408) 828-4044.

CHAPTER FIELD TRIPS

Chapter field trips are free and generally open to the public. They are oriented to conservation, protection and enjoyment of California native plants and wildlife, and we adhere to all rules and guidelines for the lands on which we are visiting.

In our region it is very important to be prepared for hiking on rugged and steep terrain, wide temperature ranges and rapidly changing conditions at any time of year. All participants should wear sturdy footwear and carry sufficient water, sun protection, food, clothing layers, personal first aid and other supplies you may need. If you have any questions about your ability to participate in a particular field trip, please contact the trip leader in advance.

Sat May 2 Mount Hamilton Road Trip (San Jose) 10am - 4pm

Join Stephen Rosenthal and Stella Yang for a special road trip up Mt. Hamilton Road and then down San Antonio Valley Road. The area has some plants found nowhere

else. We will be stopping along the road at about eight pull-outs to see what's blooming.

The west side, with several elevation changes, explores different plant communities with many wildflowers. The east slope, steep and dry, has its own interesting flora. We expect to see several rare plants such as *Lomatium observatorium*, as well as a nice collection of **blazing star** (*Mentzelia lindleyi*), a beautiful flower after which our newsletter is named.

We expect about 60 miles of driving round trip. Mount Hamilton Road is a steep, narrow, twisting mountain road. We'll form carpools at the meeting spot. Bring lunch, snacks, plenty of water, and two-way radios if you have them. Riders will share gasoline costs with drivers. We expect the trip to last until about **4pm or later**.



First fountain thistle work party, May 2008 near intersection of I-280 and Hwy. 92

There will be limited hiking, probably less than one mile total. Reservations are required and this trip is **open to CNPS members only**. Please RSVP to Steve Rosenthal sailinsteve@sbcglobal.net or (408) 923-6562 to **reserve your spot** and get carpooling directions.

Sat May 9 10am - 1:30pm Grass Walk at Edgewood County Park and Natural Preserve (Redwood City)

Come see our native grasses at Edgewood, well known for its unique and beautiful native plants and its impressive botanical diversity. Join botanist Sally Casey and co-leader Alf Fongler on this easy walk. Pack water, lunch, comfortable walking shoes and an interest in grasses. The hike distance will be about 2 miles with gentle slopes.

This trip will be limited to 18 people, as the trails are narrow. For more information or to **reserve your spot**, contact Sally at (408) 377-0989 (evenings) or email Alf Fongler at afongler@acm.org.

Sun May 10 9am - 2:30pm Stile Ranch Hike #2

Join Dee Wong, Stella Yang, Woody Collins, and Ken Himes for a 3-4 mile late spring / early summer wildflower

hike to Stile Ranch in Santa Teresa County Park, through serpentine grasslands and chaparral. This will be a great trip for those who are interested in plants and flowers that are endemic to the serpentine soil profile and seeps, and also **for those who attended the first hike in March**.

This hike is part two in a series of three hikes to see different blooming flowers over the course of spring, late spring, and late summer. With few rain events over the last few months and earlier heat, things are flowering about a month ahead of schedule. We expect to see in bloom the rare and endemic Santa Clara Valley Dudleya, *Monardella douglasii*, common jewel flower, possibly wiry snapdragon and more.

The hike will be moderate in intensity. We are starting earlier in the day to beat the heat, as there is

no shade until we get to the Fortini Trail. Bring extra water, snacks, a bag lunch, a wide brim hat and walking stick(s). Limited to 20 people due to narrow trails, so reservations are needed. **To reserve your spot** and to get an updated plant list and other trail information, please contact Dee at dee4cnps@gmail.com or (650) 670-7797.

Sun May 17 10am – 4pm Butano State Park (Pescadero in San Mateo County)

Join Ken Himes and Dee Wong as we venture along the Butano Fire Road to see an isolated colony of California rhododendron (*Rhododendron macrophylla*). We will also see chinquapin (*Chrysolepis chrysophylla* var. *minor*) and bush poppy (*Dendromecon rigida*) as we walk along the northern rim of Butano State Park. This hike will cover more distance than most CNPS hikes, about 7 1/2 miles out and back. **Meet 10am** at the parking lot at the park entrance kiosk. Bring snacks, lunch and liquids as the hike is expected last until **4pm**.

Directions: Butano State Park is about 5 miles south of the town of Pescadero. Take Cloverdale Rd. to Butano State Park. For more information, call Ken Himes at (650) 591-8560.

Memorial Day Weekend Fri-Mon May 22 - 25 Sierra Foothills Memorial Weekend Trip

Join Fred and Patricia Evans at their cabin in Arnold at 4,000 feet in the Sierra Foothills over Memorial Day weekend. Wildflower hikes will be held on Friday afternoon (for those arriving early), and all day Saturday and Sunday.

Possible field trip destinations include Calaveras Big Trees State Park and Board's Crossing (Stanislaus River). Dorm beds are available for the first 13 people signing up, and a few more can be accommodated on sofa beds. Water / electricity are available for one RV in the driveway, and tents can be pitched in the yard. Evening meals will be potluck.

The group size is limited, so the trip is **open to CNPS members only!** For more information or to register, please email Patricia Evans at paevans@stanfordalumni.org or call (650) 949-2801.

Sat Jun 6 10am - Noon Fountain Thistle Work Party (San Mateo)

See writeup in the Habitat Restoration section page 5.

Sat Jun 13 9am - 2pm Windy Hill Open Space Preserve (Skyline Blvd.)

Join leader Ken Himes and co-leader Alf Fengler for a hike along the Windy Hill Loop Trail, an 8.5-mile loop around the preserve with an elevation loss and gain of about 1,200 feet. Starting from the Skyline ridge, we will hike the Lost Trail and down to the Corte Madera Creek on the Razorback Trail and finally back up to the ridge via Hamm's Gulch Trail.

Windy Hill is famous for its great diversity of woody plants with multiple species of *Prunus* (*P. virginiana* and *P. ilicifolia*), nutmeg (*Torreya californica*), and burning bush (*Euonymus occidentalis*), among others. Ken will be sure to point out the leather-leaf fern (*Polypodium scolieri*) along the trail. If we can verify the presence of straggly gooseberry (*Ribes divaricatum*) along the Eagle Trail, we can add it to the current NRDB listing.

The trip is limited to 15 people. For more information and to **reserve your space**, contact Ken Himes at (650) 591-8560 or Alf Fengler at afengler@acm.org.

Directions: The parking lot is off the east side of Skyline Blvd. (State Route 35), 2.5 miles south of Hwy 84 and 4.7 miles north of Page Mill Rd. We'll meet in the parking lot.

Sat June 20 10am - 2pm Crystal Springs Watershed (Mid-peninsula)

See writeup in the Habitat Restoration section page 5.

Save the date! Tue - Wed July 7 - 15

Botanizing the Western and Eastern Siskiyou

The Siskiyou Mountains are where the plants of the Great Basin meet the plants of the Pacific Northwest, in a mountain range uniquely Californian. Join Ken Himes and Dee Wong as they explore portions of the western and eastern Siskiyou Mountains.

This trip is limited to CNPS members only! For more details and to **sign up**, please email Dee Wong at dee4cnps@gmail.com.

CHAPTER OFFICERS FOR 2015

Title	Name	Phone	Email
President	Stephen Rosenthal	(408) 923-6562	sailinsteve@sbcglobal.net
Vice President	Madeline Morrow	(408) 741-1150	madelinemorrow@earthlink.net
Recording Secretary	Radhika Thekkath	(650) 473-1537	rthekath@yahoo.com
Treasurer	Carolyn Dorsch	(650) 804-6162	cdorsch1@aol.com
Past President	Arvind Kumar	(408) 715-7020	arvind.kumar@cnps.org

To join our Chapter news email list please visit www.cnps-sev.org/index.php/contact-us/sign-up.

Save a Tree!

CNPS members can log in to support.cnps.org and edit their profile to receive this newsletter by email only. Look for "Chapter Newsletter" at the bottom of "My Profile."

Current and past Blazing Star newsletters are always online at the Chapter website's newsletter page: www.cnps-sev.org/index.php/blazing-star-newsletter.

DEADLINE FOR THE NEXT *BLAZING STAR*

Saturday, June 6, 2015

**Email: mattsson@surfpix.net
Phone: (408) 255-3767**

Santa Clara Valley Chapter California Native Plant Society
3921 East Bayshore Road
Palo Alto, CA 94303



Join CNPS Today!

Members receive the *Fremontia*, the *Bulletin*, and the Chapter newsletter, and other benefits listed at www.cnps.org/membership

Name _____

Address _____

City _____ State _____ Zip _____

Telephone _____

Email _____

Chapter _____

Membership level (check one):

- \$45 Individual
 \$75 Family
 \$100 Plant Lover
 \$300 Patron
 \$600 Benefactor
 \$1500 Mariposa Lily
 \$25 Student/Limited Income

Areas of interest:

- Advocacy
 Botany
 Conservation
 Education
 Field Trips
 Gardening
 Plant ID

Donations above the membership level are gratefully accepted.

Dues and donations are tax-deductible. Make your check payable to "CNPS" and mail it with this form to:

CNPS Membership, 2707 K Street Suite 1, Sacramento, CA 95816 • 916-447-2677 • fax 916-447-2727

FIRST-CLASS

CALENDAR OF EVENTS (page # in parentheses)

May 2 Sat Mt. Hamilton road trip (5)
May 9 Sat Edgewood grass walk (6)
May 10 Sun Stile Ranch field trip #2 (6)
May 12 Tue GWN – Lose Your Lawn - Boulton (2)
May 15 Fri **General Meeting - Cunningham** (1)
May 16 Sat Edgewood Saturday weeding (5)
May 17 Sun Butano State Park field trip (6)
May 19 Tue GWN – Bee Gardens - Ballentine (2)
May 21 Thu Conservation Committee meeting (4)
May 22-25 Fri-Mon Sierra Foothills field trip (7)
May 28 Thu GWN – Graywater - Luna (3)
May 29 Fri Keying with Natives (4)
Jun 6 Sat **Newsletter submittal deadline** (7)

Jun 6 Sat Fountain Thistle Restoration (5)
Jun 6 Sat GWN – Seed Exchange - Rosenthal (3)
Jun 10 Wed GWN – Gardening Books - Pascoe (3)
Jun 13 Sat Windy Hill OSP field trip (7)
Jun 18 Thu Conservation Committee meeting (4)
Jun 20 Sat Edgewood Saturday weeding (5)
Jun 20 Sat Fountain Thistle Restoration (5)
Jun 24 Wed GWN – Butterfly Garden - Mansurs (3)
Jun 25 Thu **Newsletter Mailing Party - 10am PCC**
Jun 26 Fri Keying with Natives (4)
Wed & Thu Nursery workdays (2)
Wed 5:30pm, Fri 9am Edgewood Weed Warriors (5)

The next Chapter Board meeting will be **Thursday, June 11 at 7:00pm** at the PCC, 3921 E. Bayshore Road in Palo Alto.

Chapter Board meetings are open to all Chapter members and their guests.

For more information contact Stephen Rosenthal at sailinsteve@sbcglobal.net.

The California Native Plant Society is a statewide non-profit organization of amateurs and professionals with a common interest in California's native plants. The Society, working with its local chapters, seeks to increase understanding and to preserve the rich heritage of the native flora for future generations. Membership is open to all. Individual memberships are \$45.00 per year. If you have questions about your newsletter subscription, please contact membership@cnps-scv.org. Address changes may be submitted to cnps@cnps.org and please put "member address change" in the subject line.